



Gold Apollo Co., Ltd.

Alpha-Numeric Display Pager

MODEL : AL-A25



PAGER PROGRAMMING GUIDE

Contents

GETTING STARTED	1
EQUIPMENT REQUIRED	1
EQUIPMENT SETUP	1
INSTALLING PROGRAMMER SOFTWARE	3
INSTALLATION	3
RUNNING	7
ALA25 PROGRAMMING	8
INTRODUCTION	8
STARTING THE PROGRAMMER	8
MAIN MENU	10
MENU BAR	10
FREQ. & CODES	12
<i>Frequency</i>	12
<i>Capcode (Decimal Address)</i>	13
<i>Message Type Status</i>	15
<i>Auto Increase 1 after write</i>	18
ALERTS AND STATUS	19
<i>Alerts and Status</i>	20
<i>Manu Of Pager</i>	22
<i>Manual Write</i>	23
<i>Prompts</i>	23
PROMPTS EDIT	24

Getting Started

The ALA25 Pager Programming software, provides the flexibility to program ALA25 pagers to meet individual requirements. To obtain the best results from the product, please take a few minutes to read this instruction guide.

Equipment Required

To install and operate the programmer, you need a system that meets the following minimum requirements:

- An personal computer (PC) with printer port, or compatible
- Windows 98 SE or above operating system (XP Recommended)
- 256 MB of RAM
- ALA25 Programmer
- An USB cable
- ALA25 Pager Programming Software

Equipment Setup

Refer to Figure 1 while performing the follows:

1. At the rear of the PC, connect the USB cable to the usb port on your computer.
2. Plug end of the USB cable into the ALA25 programmer.
3. Hardware installation is complete.



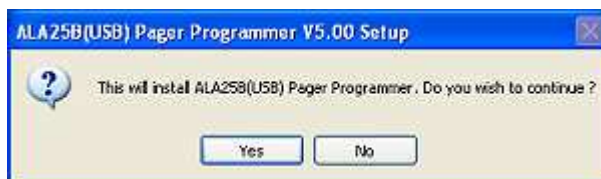
Figure 1 Programmer Hardware Connections

Installing Programmer Software

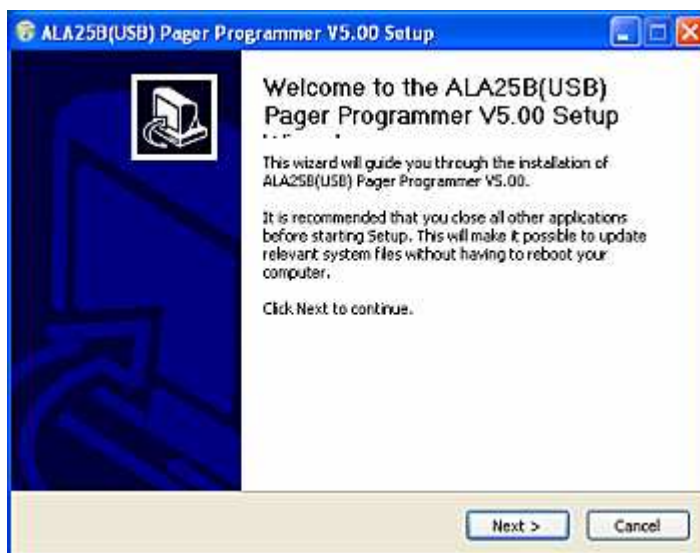
Installation

Install the programmer software into a PC as follows:

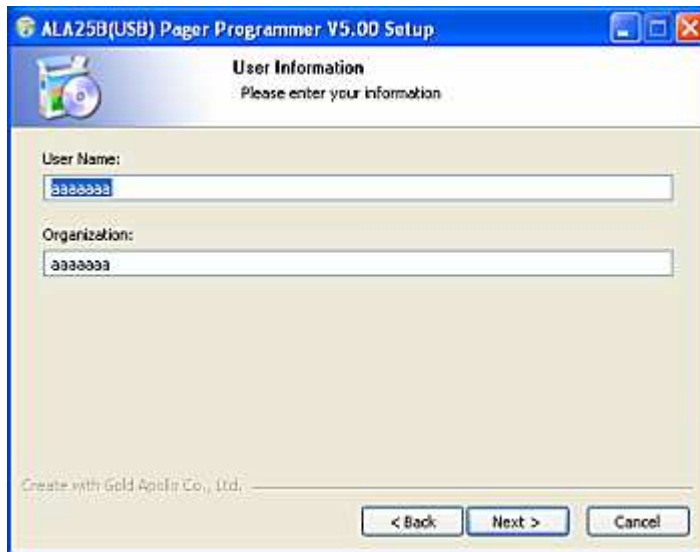
1. Uncompress the ALA25B(USB)V50(NR).zip and save them in a temporary directory.
2. Double click the setup.exe file. Click on "Y".



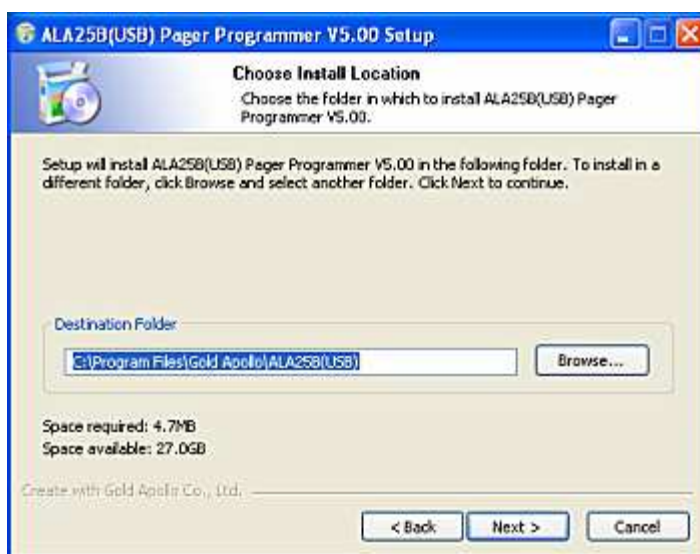
3. Click "Next" on the Welcome screen.



4. Enter your user information and click "Next". (Note: you must enter at least a single character "into the company field)

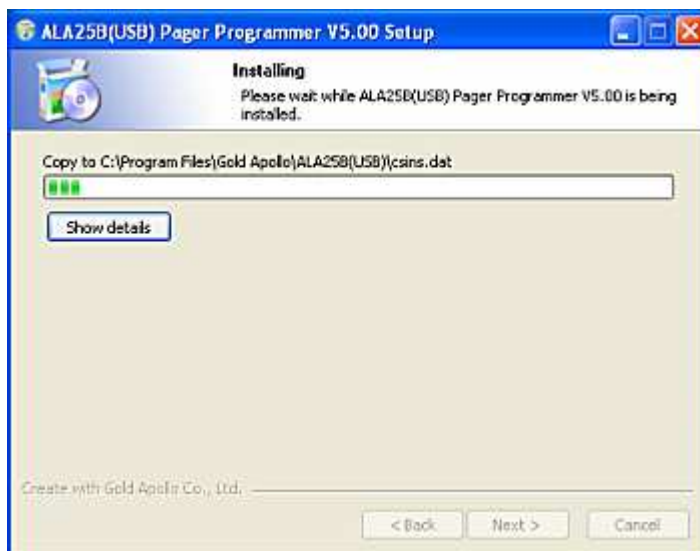
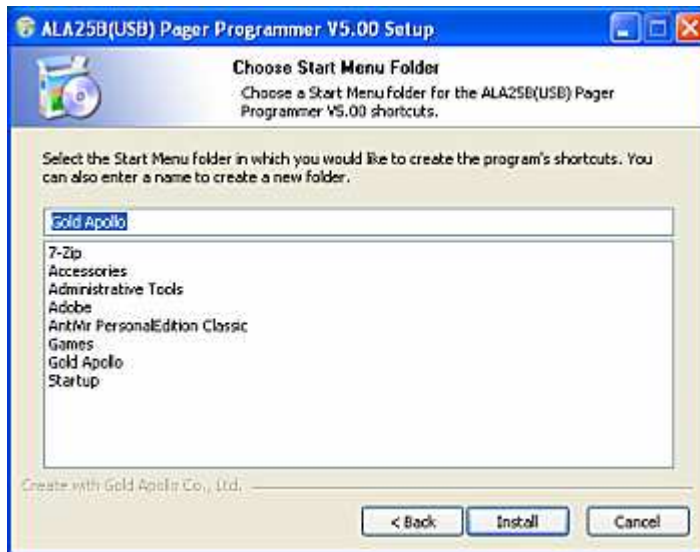


5. Choose where the program should be installed and click "Next".

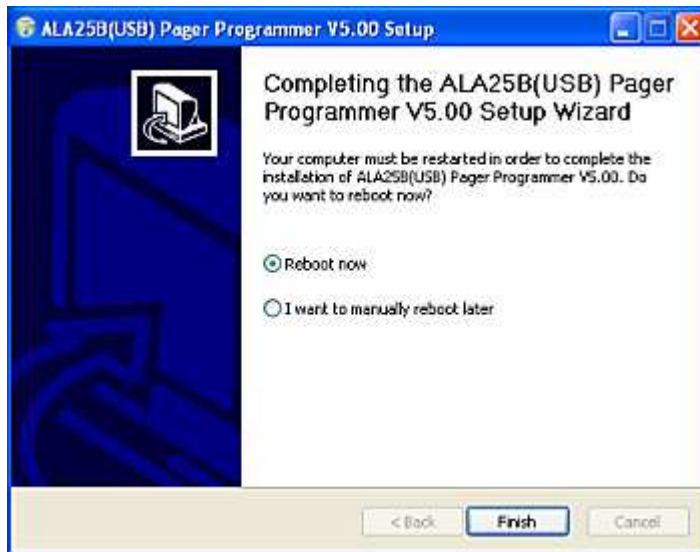


Installing Programmer Software

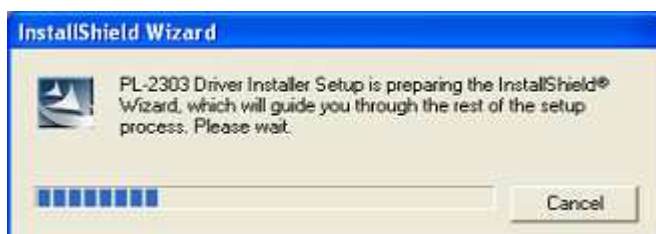
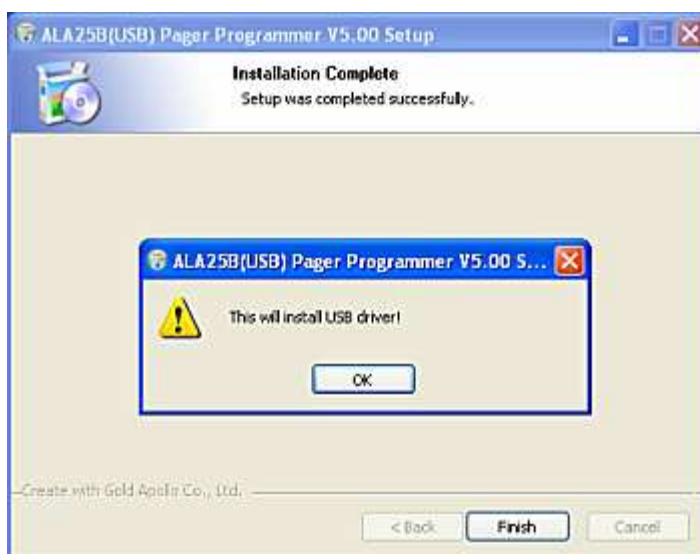
6. On the Select Program Folder screen choose where you would like the program to show up in your start menu and click "Install".

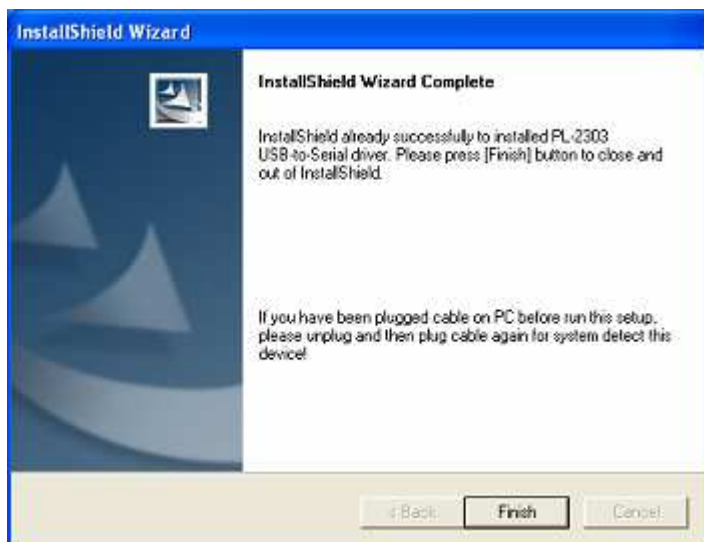


7. If you had installed USB driver then select reboot now and click “Finish” on the setup complete screen.



8. If you did not install USB driver, click “OK” to install USB driver.





9. Please reboot your computer after USB driver and programming software installed.

Running

You now have the program installed. To run it from the Start menu/ Programs/ Gold Apollo /ALA25 Pager Programmer

ALA25 Programming

Introduction

Preparing a Pager for Reading or Programming:

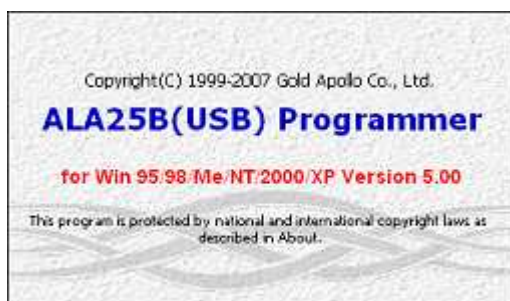
1. Establish a computer hardware configuration.
2. Run the programming software of ALA25.
3. A Power LED illuminates on the Programming Interface to indicate proper contact.
If the Power LED did not illuminate then you must check the configuration and restart the programming software of ALA25.
4. Align the pager contact pin holes with the contact pins of the ALA25 Programmer.
5. Press down on the pager until it is tight in the fixture.
6. Turn the pager off or wait the pager until standby mode. The pager is now ready to read or program.

Starting the Programmer

1. The application can be launched from Start → Programs → Gold Apollo → ALA25 Pager Programmer. The following window appears:



2. Input your password. If key in wrong password for 3 times, the system shuts off automatically. If the password is correct, the following window appears:

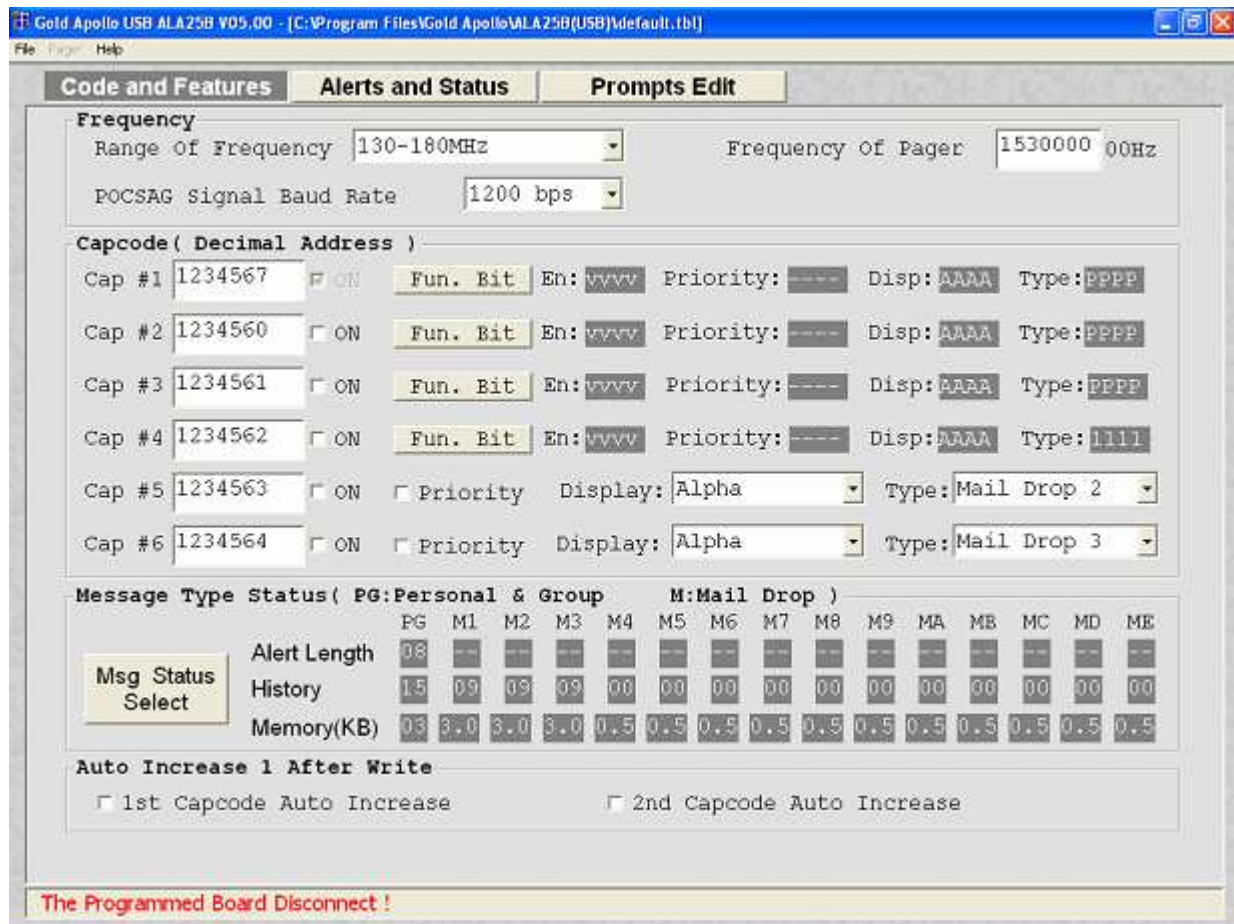


3. Now, the system examines that the ALA25 programmer is well installed. If any questions, the following window appears:



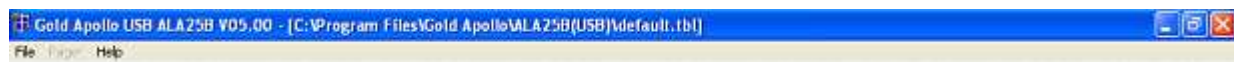
4. Please re-check the ALA25 programmer and printer port are well installed or not. If connection succeeds with the ALA25 programmer, the system enters the Main Menu.

Main Menu



Menu bar

In the menu bar, there are main menus with submenus like those conventionally used in Windows applications.



File | Open

Open the AL924 code-plug file. The file has the extension “.tbl”.



File | Save

Save the current code-plug data to a file.



File | Save As

Save the current code-plug data to a file with different filename.



Pager | Write

Write the current code-plug data to the pager.

**Pager | Read**

Read code-plug data from the pager.

**Pager | Verify**

Verify the pager data.

**Help**

Information about the ALA25 pager programming version.



Freq. & Codes

Code and Features **Alerts and Status** **Prompts Edit**

Frequency
 Range Of Frequency: 130-180MHz Frequency Of Pager: 1530000 00Hz
 POCSAG Signal Baud Rate: 1200 bps

Capcode (Decimal Address)

Cap #	Decimal Address	ON	Fun. Bit	En	Priority	Disp	Type
Cap #1	1234567	<input checked="" type="checkbox"/>	Fun. Bit	En: vvvv	Priority: ----	Disp: AAAA	Type: PPPP
Cap #2	1234560	<input checked="" type="checkbox"/>	Fun. Bit	En: vvvv	Priority: ----	Disp: AAAA	Type: PPPP
Cap #3	1234561	<input checked="" type="checkbox"/>	Fun. Bit	En: vvvv	Priority: ----	Disp: AAAA	Type: PPPP
Cap #4	1234562	<input checked="" type="checkbox"/>	Fun. Bit	En: vvvv	Priority: ----	Disp: AAAA	Type: llll
Cap #5	1234563	<input checked="" type="checkbox"/>	<input type="checkbox"/> Priority	Display: Alpha	Type: Mail Drop 2		
Cap #6	1234564	<input checked="" type="checkbox"/>	<input type="checkbox"/> Priority	Display: Alpha	Type: Mail Drop 3		

Message Type Status (PG:Personal & Group M:Mail Drop)

	PG	M1	M2	M3	M4	M5	M6	M7	M8	M9	MA	MB	MC	MD	ME
Alert Length	08	--	--	--	--	--	--	--	--	--	--	--	--	--	--
History	15	09	09	09	00	00	00	00	00	00	00	00	00	00	00
Memory(KB)	03	3.0	3.0	3.0	0.5	0.5	0.5	0.5	0.5	0.5	0.5	0.5	0.5	0.5	0.5

Auto Increase 1 After Write
☐ 1st Capcode Auto Increase ☐ 2nd Capcode Auto Increase

The Programmed Board Disconnect !

Frequency

Frequency
 Range Of Frequency: 130-180MHz Frequency Of Pager: 1530000 00Hz
 POCSAG Signal Baud Rate: 1200 bps

- 🔗 **Range Of Frequency**
You can select the range of frequency and all setting will load default value.
- 🔗 **Frequency Of Pager**
The frequency is on which the pager operates.
- 🔗 **POCSAG Signal Baud Rate**
The baud rate is on which the pager operates.

Capcode (Decimal Address)

Capcode (Decimal Address)							
Cap #1	1234567	<input checked="" type="checkbox"/> ON	Fun. Bit	En: vvvv	Priority: ----	Disp: AAAA	Type: PPPP
Cap #2	1234560	<input type="checkbox"/> ON	Fun. Bit	En: vvvv	Priority: ----	Disp: AAAA	Type: PPPP
Cap #3	1234561	<input type="checkbox"/> ON	Fun. Bit	En: vvvv	Priority: ----	Disp: AAAA	Type: PPPP
Cap #4	1234562	<input type="checkbox"/> ON	Fun. Bit	En: vvvv	Priority: ----	Disp: AAAA	Type: 1111
Cap #5	1234563	<input type="checkbox"/> ON	<input type="checkbox"/> Priority	Display: Alpha		Type: Mail Drop 2	
Cap #6	1234564	<input type="checkbox"/> ON	<input type="checkbox"/> Priority	Display: Alpha		Type: Mail Drop 3	

Cap #1

Please input 1st Capcode (7 Dec digits between 8 and 2097151).

☒ ON

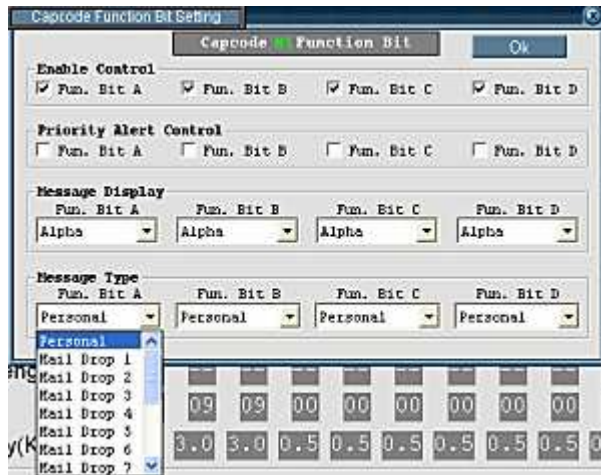
Enable or disable 2nd Capcode (address).

Fun. Bit

Click to set function bit(A 、 B 、 C 、 D) message control.

Capcode Function Bit Setting				
Capcode <input checked="" type="checkbox"/> Function Bit <input type="button" value="Ok"/>				
Enable Control				
<input checked="" type="checkbox"/> Fun. Bit A	<input checked="" type="checkbox"/> Fun. Bit B	<input checked="" type="checkbox"/> Fun. Bit C	<input checked="" type="checkbox"/> Fun. Bit D	
Priority Alert Control				
<input type="checkbox"/> Fun. Bit A	<input type="checkbox"/> Fun. Bit B	<input type="checkbox"/> Fun. Bit C	<input type="checkbox"/> Fun. Bit D	
Message Display				
Fun. Bit A	Fun. Bit B	Fun. Bit C	Fun. Bit D	
Alpha	Alpha	Alpha	Alpha	
Message Type				
Fun. Bit A	Fun. Bit B	Fun. Bit C	Fun. Bit D	
Personal	Personal	Personal	Personal	

Capcode Function Bit Setting				
Capcode <input checked="" type="checkbox"/> Function Bit <input type="button" value="Ok"/>				
Enable Control				
<input checked="" type="checkbox"/> Fun. Bit A	<input checked="" type="checkbox"/> Fun. Bit B	<input checked="" type="checkbox"/> Fun. Bit C	<input checked="" type="checkbox"/> Fun. Bit D	
Priority Alert Control				
<input type="checkbox"/> Fun. Bit A	<input type="checkbox"/> Fun. Bit B	<input type="checkbox"/> Fun. Bit C	<input type="checkbox"/> Fun. Bit D	
Message Display				
Fun. Bit A	Fun. Bit B	Fun. Bit C	Fun. Bit D	
Alpha	Alpha	Alpha	Alpha	
STD Numeric				
PRC Numeric				
Alpha				
Ideo				
Tone Only				
	Fun. Bit B	Fun. Bit C	Fun. Bit D	
	Personal	Personal	Personal	



- ☒ **En**
Function Bit(A、B、C、D) Enable Control: V is Enable, - is disable.
- ☒ **Priority**
Function Bit(A、B、C、D) Priority Alert: V is Enable, - is disable.
- ☒ **Disp.**
Function Bit(A、B、C、D) Message Display:
 - **N**: Standard Number.
 - **P**: PRC Number.
 - **A**: Alpha number.
 - **I**: Ideographic.
- ☒ **Type**
Function Bit(A、B、C、D) Message Type:
 - **P**: Personal.
 - **1** to **9**: Mail Drop 1 to Mail Drop 9.
 - **A** to **E**: Mail Drop A to Mail Drop E.
 - **G**: Group.

Message Type Status

Message Type		Status(PG:Personal & Group M:Mail Drop)														
		PG	M1	M2	M3	M4	M5	M6	M7	M8	M9	MA	MB	MC	MD	ME
Msg Status Select	Alert Length	08	--	--	--	--	--	--	--	--	--	--	--	--	--	--
	History	15	09	09	09	00	00	00	00	00	00	00	00	00	00	00
	Memory(KB)	03	3.0	3.0	3.0	0.5	0.5	0.5	0.5	0.5	0.5	0.5	0.5	0.5	0.5	0.5



Msg. Status Select

Click to set personal and mail drop(1~9 · A~E) messages status.

Personal and Mail Drop Status Control

Personal and Group Status
 Personal: Alert Length 8 sec Memory 3KB

Mail Drop Status (A:Alert Length H:History M:Memory)

Drop 1: A: Disable H: 9 M: 3.0KB	Drop 8: A: Disable H: 0 M: 0.5KB
Drop 2: A: Disable H: 9 M: 3.0KB	Drop 9: A: Disable H: 0 M: 0.5KB
Drop 3: A: Disable H: 9 M: 3.0KB	Drop A: A: Disable H: 0 M: 0.5KB
Drop 4: A: Disable H: 0 M: 0.5KB	Drop B: A: Disable H: 0 M: 0.5KB
Drop 5: A: Disable H: 0 M: 0.5KB	Drop C: A: Disable H: 0 M: 0.5KB
Drop 6: A: Disable H: 0 M: 0.5KB	Drop D: A: Disable H: 0 M: 0.5KB
Drop 7: A: Disable H: 0 M: 0.5KB	Drop E: A: Disable H: 0 M: 0.5KB

Total History 50% Total Memory 60%

OK

Personal and Mail Drop Status Control

Personal and Group Status
 Personal: Alert Length 8 sec Memory 3KB

Mail Drop Status (A:Alert Length H:History M:Memory)

Drop 1: A: Disable H: 9 M: 3.0KB	Drop 8: A: Disable H: 0 M: 0.5KB
Drop 2: A: Disable H: 9 M: 3.0KB	Drop 9: A: Disable H: 0 M: 0.5KB
Drop 3: A: Disable H: 9 M: 3.0KB	Drop A: A: Disable H: 0 M: 0.5KB
Drop 4: A: Disable H: 0 M: 0.5KB	Drop B: A: Disable H: 0 M: 0.5KB
Drop 5: A: Disable H: 0 M: 0.5KB	Drop C: A: Disable H: 0 M: 0.5KB
Drop 6: A: Disable H: 0 M: 0.5KB	Drop D: A: Disable H: 0 M: 0.5KB
Drop 7: A: Disable H: 0 M: 0.5KB	Drop E: A: Disable H: 0 M: 0.5KB

Total History 50% Total Memory 60%

OK

Personal and Mail Drop Status Control

Personal: Alert Length: 8 sec Memory: 3kB

Mail Drop Status (A:Alert Length H:History M:Memory)

Drop 1: A: Disable H: 9 M: 3.0kB	Drop 8: A: Disable H: 0 M: 0.5kB
Drop 2: A: Disable H: 9 M: 3.0kB	Drop 9: A: Disable H: 0 M: 0.5kB
Drop 3: A: Disable H: 9 M: 3.0kB	Drop A: A: Disable H: 0 M: 0.5kB
Drop 4: A: Disable H: 0 M: 0.5kB	Drop B: A: Disable H: 0 M: 0.5kB
Drop 5: A: Disable H: 0 M: 0.5kB	Drop C: A: Disable H: 0 M: 0.5kB
Drop 6: A: Disable H: 0 M: 0.5kB	Drop D: A: Disable H: 0 M: 0.5kB
Drop 7: A: Disable H: 0 M: 0.5kB	Drop E: A: Disable H: 0 M: 0.5kB

Total History 50% Total Memory 64%

Ok

Personal and Mail Drop Status Control

Personal: Alert Length: 8 sec Memory: 3kB

Mail Drop Status (A:Alert Length H:History M:Memory)

Drop 1: A: Disable H: 9 M: 3.0kB	Drop 8: A: Disable H: 0 M: 0.5kB
Drop 2: A: Beep 1 sec H: 9 M: 3.0kB	Drop 9: A: Disable H: 0 M: 0.5kB
Drop 3: A: 15 sec H: 9 M: 3.0kB	Drop A: A: Disable H: 0 M: 0.5kB
Drop 4: A: Disable H: 0 M: 0.5kB	Drop B: A: Disable H: 0 M: 0.5kB
Drop 5: A: Disable H: 0 M: 0.5kB	Drop C: A: Disable H: 0 M: 0.5kB
Drop 6: A: Disable H: 0 M: 0.5kB	Drop D: A: Disable H: 0 M: 0.5kB
Drop 7: A: Disable H: 0 M: 0.5kB	Drop E: A: Disable H: 0 M: 0.5kB

Total History 50% Total Memory 64%

Ok

Personal and Mail Drop Status Control

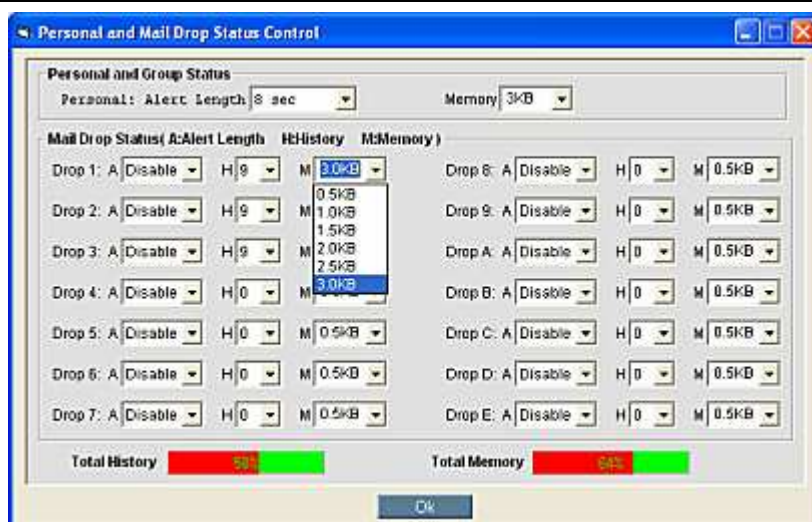
Personal: Alert Length: 8 sec Memory: 3kB

Mail Drop Status (A:Alert Length H:History M:Memory)

Drop 1: A: Disable H: 9 M: 3.0kB	Drop 8: A: Disable H: 0 M: 0.5kB
Drop 2: A: Disable H: 3 M: 3.0kB	Drop 9: A: Disable H: 0 M: 0.5kB
Drop 3: A: Disable H: 4 M: 3.0kB	Drop A: A: Disable H: 0 M: 0.5kB
Drop 4: A: Disable H: 5 M: 0.5kB	Drop B: A: Disable H: 0 M: 0.5kB
Drop 5: A: Disable H: 6 M: 0.5kB	Drop C: A: Disable H: 0 M: 0.5kB
Drop 6: A: Disable H: 7 M: 0.5kB	Drop D: A: Disable H: 0 M: 0.5kB
Drop 7: A: Disable H: 8 M: 0.5kB	Drop E: A: Disable H: 0 M: 0.5kB

Total History 50% Total Memory 64%

Ok



☒ Personal and Group Alert Length

Message Type	Status (PG: Personal & Group)	H: Mail Drop	M: Mail Drop
Alert Length	PG: 08	M1: 08	M2: 08
History	PG: 16	M1: 00	M2: 00
Memory(KB)	PG: 0.5	M1: 0.5	M2: 0.5

The available selections for all personal and group call messages alerts are:

- **02**: 2 sec.
- **08**: 8 sec.
- **16**: 16 sec.
- **32**: 32 sec.
- **CT**: continuous.

☒ Mail Drop Alert Length

Message Type	Status (PG: Personal & Group)	H: Mail Drop	M: Mail Drop
Alert Length	PG: 08	M1: 08	M2: 08
History	PG: 16	M1: 00	M2: 00
Memory(KB)	PG: 0.5	M1: 0.5	M2: 0.5

The available selections for mail drop messages alerts are:

- **--**: Disable.
- **BP**: Short Beep.
- **01**: 1 sec.
- **16**: 16 sec.

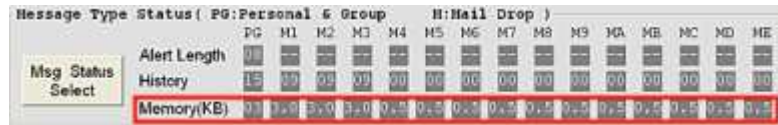
☒ History

Message Type	Status (PG: Personal & Group)	H: Mail Drop	M: Mail Drop
Alert Length	PG: 08	M1: 08	M2: 08
History	PG: 16	M1: 00	M2: 00
Memory(KB)	PG: 0.5	M1: 0.5	M2: 0.5

The selections are only available on mail-drop addresses. The pager can

keep up several history messages. Valid selections are: 0~9.

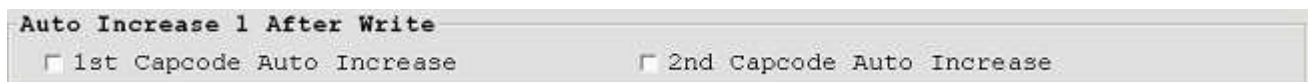
☒ Memory



The available selections for mail-drop memory size are: 0.5 KB, 1.0 KB, 1.5KB, 2.0 KB, 2.5 KB, and 3.0 KB.

The available selections for personal memory size are: 3 KB ~ 15KB.

Auto Increase 1 after write



☑ 1st Capcode Auto Increase

1st capcode always increment by one after write.

☑ 2nd Capcode Auto Increase

2nd capcode always increment by one after write.

Alerts and Status

Code and Features	Alerts and Status	Prompts Edit
Alerts and Status		
<input type="checkbox"/> Alert and Vibrate	Paging Display Mode <input type="text" value="Direct"/>	<input type="checkbox"/> Direct Show Lamp On
<input type="checkbox"/> Discard Error Msg	<input checked="" type="checkbox"/> Disp Source Addr ON	Sequential Lockout <input type="text" value="disable"/>
<input checked="" type="checkbox"/> Lowcell Alert ON	Polarity <input type="text" value="Normal"/>	Reminder Duration <input type="text" value="2 minutes"/>
Battery Gauge Level-High <input type="text" value="1.39V"/>	<input checked="" type="checkbox"/> Duplicate Msg.	Out-of Service <input type="text" value="Disable"/>
Battery Gauge Level-Med <input type="text" value="1.29V"/>	Read Time Out <input type="text" value="12 sec"/>	Password(4 Dec) <input type="text" value="0000"/>
Battery Gauge Level-Low <input type="text" value="1.19V"/>	Screen Contrast <input type="text" value="4"/>	<input type="button" value="Screen"/>
<input checked="" type="checkbox"/> Push Key Lamp On Enable	<input type="checkbox"/> RD Key Delete Enable	<input type="checkbox"/> RD Key Pager Off
<input checked="" type="checkbox"/> Long Message Control Enable	<input checked="" type="checkbox"/> Counter Out Enable	
Menu Of Pager		
<input type="checkbox"/> Set Scroll Disable	<input type="checkbox"/> Set Alarm Disable	<input type="checkbox"/> Zoom In Disable
<input type="checkbox"/> Pager Off Disable	<input type="checkbox"/> Set Time Disable	
<input type="checkbox"/> Auto Sleep Disable	<input checked="" type="checkbox"/> Set Alert Disable	<input type="text" value="Tone 1"/>
Manual Write		
<input checked="" type="checkbox"/> Manual Write Enable	<input checked="" type="checkbox"/> Password Required Enable	
<input checked="" type="checkbox"/> Frequency Modification Enable	<input checked="" type="checkbox"/> Password Modification Enable	
Prompts		
Power Up Logo <input type="text" value="APOLLO"/>	<input type="text" value="L C R"/>	Logo Font <input type="text" value="English(Large)"/>
Prompt Language Type <input type="text" value="English"/>	Date Display Method <input type="text" value="mm-dd-yy"/>	
The Programmed Board Disconnect !		

Alerts and Status

☒ Alerts and Vibrate

If it is selected, beep and vibration will active together.



Paging Display Mode

If “Direct” is selected then the message will show on the display at a message received. Otherwise it only shows a message location icon on the display.

☒ Direct Show Lamp On

When the paging display is “Direct”, if it is selected, the back-light will turn on at a message received.

☒ Discard Error Msg.

If it is selected, error message will be discarded.

☒ Disp. Source Addr. ON

If it is selected, the message will show the address source at last.



Sequential Lockout

The value is a sequential lockout timer begins when a message arrives and is flagged as being sequentially locked out. If duplicate messages arrive, one of the messages is disregarded and not flagged as a duplicate. Valid selections are disabled, 30 seconds, 60 seconds, 120 seconds, 175 seconds and 240 seconds.

☒ Lowcell Alert ON

If it is selected, the pager emits a, low battery cell alert when the battery reaches a low cell state.



Polarity

It select the RF signal polarity is normal or invert.

**Reminder Duration**

With this option selected, the time period begins with a newly arrived message and is reset every time a new message is received. Once the time period expires, the pager does not emit any more reminder alerts until a new message arrives. Valid time period selections are: Disable, 2 minutes, 10 minutes and 60 minutes.

**Duplicate Msg.**

If it is selected, duplication detection is performed on all personal messages with the same message type as the new message, on a character by character basis. Error characters are ignored during the check. If all non-error characters in both messages match, the existing matching message is flagged as a duplicate. The message with the least number of errors is stored and the other messages are discarded. Duplication is not performed on mail-drop messages.

**Battery Gauge Level-High**

This value represents the battery voltage level necessary for the battery gauge to display a full battery. If the battery voltage is higher or equal to this value, the full battery gauge icon is displayed. Valid selections are: 1.58V, 1.53V, 1.48V, 1.43V, 1.39V, 1.35V, 1.29V, 1.23V, 1.19V, 1.14V, 1.09V, 1.05V, and 1.00V. The High level must be greater than the Med level, and the Med level Must be greater than the Low level. None of the levels can be equal to each other.

**Battery Gauge Level-Med**

This value represents the battery voltage level necessary for the battery gauge to display a full battery. If the battery voltage is higher or equal to this value, the full battery gauge icon is displayed. Valid selections are: 1.58V, 1.53V, 1.48V, 1.43V, 1.39V, 1.35V, 1.29V, 1.23V, 1.19V, 1.14V, 1.09V, 1.05V, and 1.00V. The High level must be greater than the Med level, and the Med level Must be greater than the Low level. None of the levels can be equal to each other.

**Battery Gauge Level-Low**

This value represents the battery voltage level necessary for the battery gauge to display a full battery. If the battery voltage is higher or equal to this value, the full battery gauge icon is displayed. Valid selections are: 1.58V, 1.53V, 1.48V, 1.43V, 1.39V, 1.35V, 1.29V, 1.23V, 1.19V, 1.14V, 1.09V, 1.05V, and 1.00V. The High level must be greater than the Med level, and the Med level Must be greater than the Low level. None of the levels can be equal to each other.

**Push Key Lamp On Enable**

If it is selected, the back-light will turn on after any key be pressed.

☒ **RD Key Delete Enable**

If it is selected, the RD key can use as delete feature at read message moment.

☒ **RD Key Pager Off**

If it is selected, the RD key can use as Pager off feature at time display moment.

☒ **Long Message Control Enable.**

If it is selected, then the message most length is 2,000 characters, otherwise the length only can be 300 characters.

**Out-of Service**

With an out-of-service time specified by the code plug, the pager is considered “out of service” when it does not detect a POCSAG synchronization word for that time period. The out-of-service icon displays at this time. Valid selections are: disabled, 1 min, 2 min, 5 min and 10 min.

**Read Time Out**

The current pager display changes after the selected time frame has expired. Valid selections are: 8 sec, 12 sec, 20 sec, 30 sec.

**Password (4 Dec)**

It is used for the user’s manual programming.

**Screen Contrast**

It selects the LCD display contract level.

☒ **Counter Out Enable**

If it is selected, the message will indicate the counter number at first.

Manu Of Pager

Menu Of Pager		
<input type="checkbox"/> Set Scroll Disable	<input type="checkbox"/> Set Alarm Disable	<input type="checkbox"/> Zoom In Disable
<input type="checkbox"/> Pager Off Disable	<input type="checkbox"/> Set Time Disable	
<input type="checkbox"/> Auto Sleep Disable	<input checked="" type="checkbox"/> Set Alert Disable	Tone 1

☒ **Set Scroll Disable**

If it is selected, menu of scroll is disabled.

☒ **Pager Off Disable**

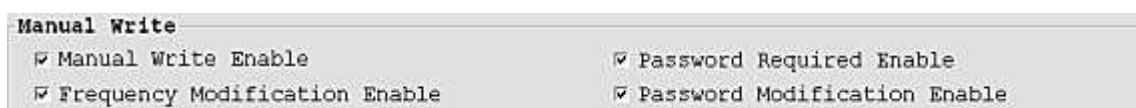
If it is selected, menu of pager off is disabled.

☒ **Auto Sleep Disable**

If it is selected, menu of auto sleep is disabled.

- ☒ **Set Alarm Disable**
If it is selected, menu of set alarm is disabled.
- ☒ **Set Time Disable**
If it is selected, menu of set time is disabled.
- ☒ **Set Alert Disable**
If it is selected, menu of set alert is disabled then you must select one of 5 type alerts as your default.
- ☒ **Zoom In Disable**
If it is selected, menu of zoom function will be disabled.

Manual Write



The screenshot shows a window titled "Manual Write" with four checked options arranged in a 2x2 grid:

<input checked="" type="checkbox"/> Manual Write Enable	<input checked="" type="checkbox"/> Password Required Enable
<input checked="" type="checkbox"/> Frequency Modification Enable	<input checked="" type="checkbox"/> Password Modification Enable

- ☒ **Manual Write Enable**
If it is selected, manual write enable.
- ☒ **Frequency Modification Enable**
If it is selected, frequency modification is enabled at manual programming.
- ☒ **Password Required Enable**
If it is selected, enters manual programming password is required.
- ☒ **Password Modification Enable**
If it is selected, enters manual programming password can be modification.

Prompts



The screenshot shows a window titled "Prompts" with the following settings:

Power Up Logo	<input type="text" value="APOLLO"/>	<input type="button" value="L"/> <input type="button" value="C"/> <input type="button" value="R"/>	Logo Font	<input type="text" value="English (Large)"/>
Prompt Language Type	<input type="text" value="English"/>	Date Display Method	<input type="text" value="mm-dd-yy"/>	

Prompts Edit

Each prompt can be customized in the code-lug, if desired, or the defaults can be used.

Code and Features	Alerts and Status	Prompts Edit
NO PAGES ----->	NO PAGES	R DELETE ALL ? ---> DELETE ALL ?
TONE ONLY ----->	TONE ONLY	C TIME SET -----> TIME SET
SLEEP ----->	SLEEP	L ALARM SET -----> ALARM SET
SILENT ----->	SILENT	D SCROLL SET -----> SCROLL SET
PAGER OFF ? ---->	PAGER OFF ?	START END -----> START END
DELETE? ----->	DELETE ?	SILENT & BEEP --> SILENT & BEEP
UP OR ESCAPE --->	UP OR ESCAPE	PAGER OFF -----> PAGER OFF
MESSAGE LOCK --->	MESSAGE LOCK	SET ALERT -----> SET ALERT
MESSAGE UNLOCK ->	MESSAGE UNLOCK	AUTO SLEEP SET -> AUTO SLEEP SET
DELETE ----->	DELETE	MESSAGE AREA ---> MESSAGE AREA
DELETE ALL ----->	DELETE ALL	MAIL DROP AREA -> MAIL DROP AREA
MOVE TO MEMO --->	MOVE TO MEMO	ZOOM IN -----> ZOOM IN
SET SCROLL ----->	SET SCROLL	ZOOM OUT -----> ZOOM OUT
SET TIME ----->	SET TIME	CHIRP ON -----> CHIRP ON
SET ALARM ----->	SET ALARM	CHIRP OFF-----> CHIRP OFF

The Programmed Board Disconnect !